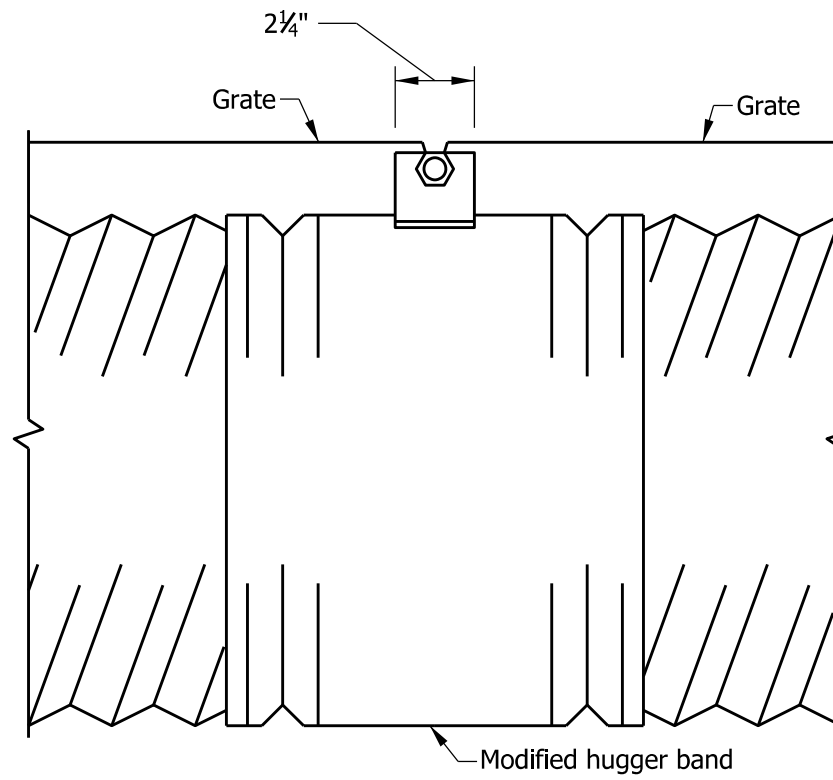
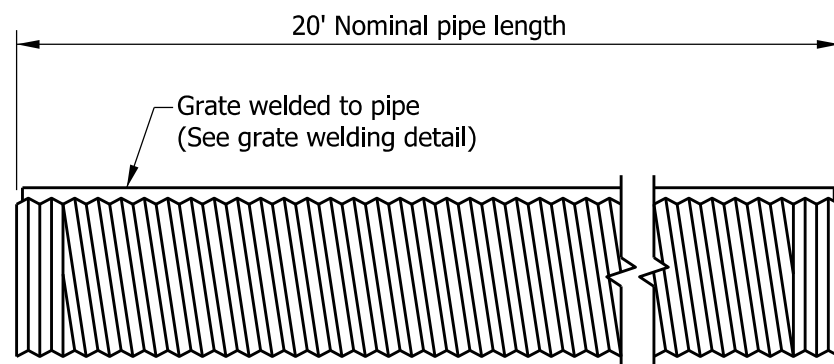


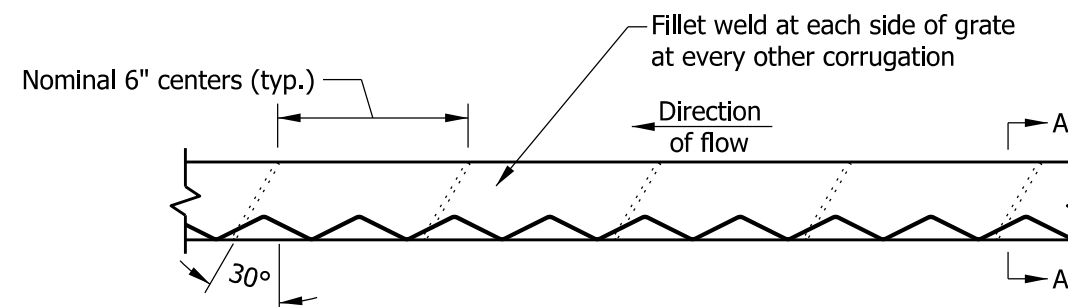
MODIFIED HUGGER BAND
TOP VIEW



MODIFIED HUGGER BAND
SIDE VIEW



TYPICAL PIPE SECTION



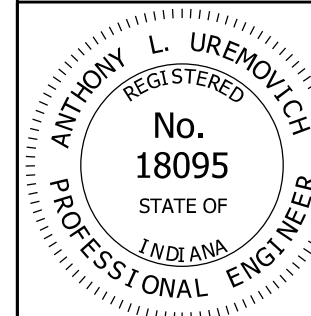
GRATE WELDING DETAIL

INDIANA DEPARTMENT OF TRANSPORTATION

SLOTTED DRAIN PIPE

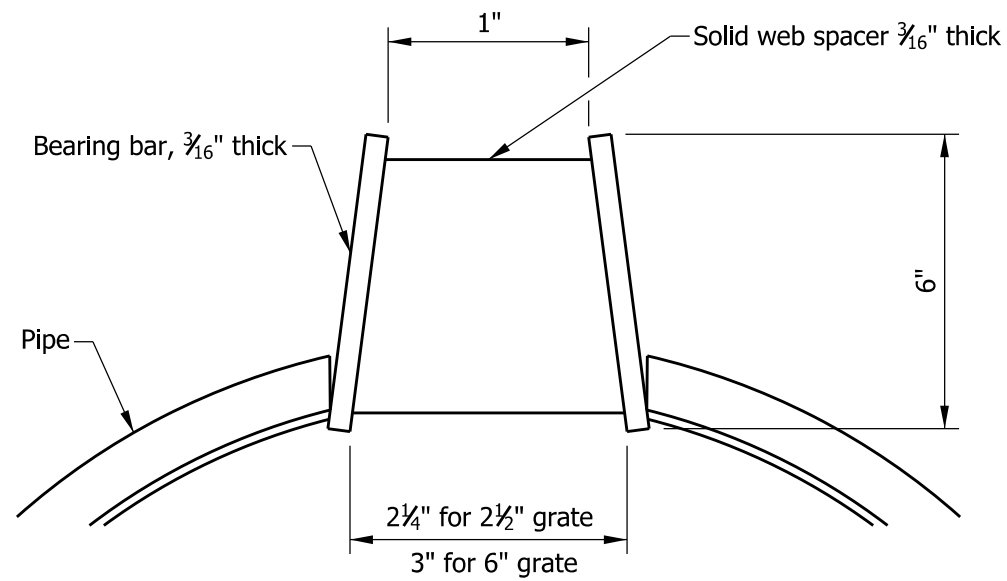
APRIL 1995

STANDARD DRAWING NO. E 715-SLDR-01

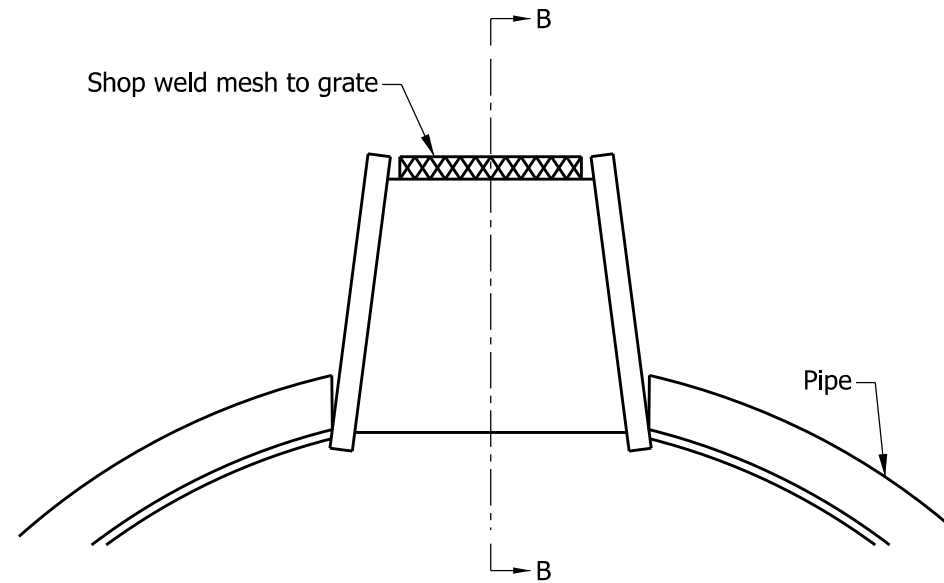


/s/ *Anthony L. Uremovich* 11-15-99
DESIGN STANDARDS ENGINEER DATE

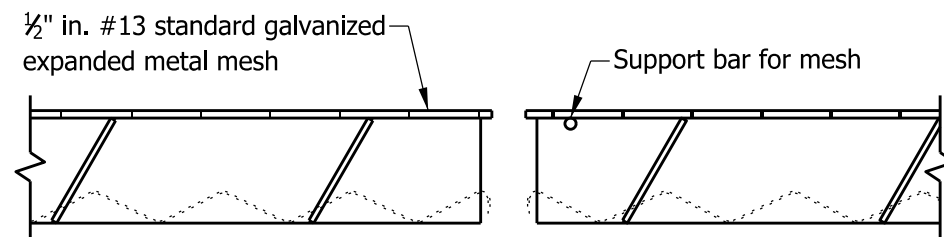
/s/ *Firooz Zandi* 11-15-99
CHIEF HIGHWAY ENGINEER DATE



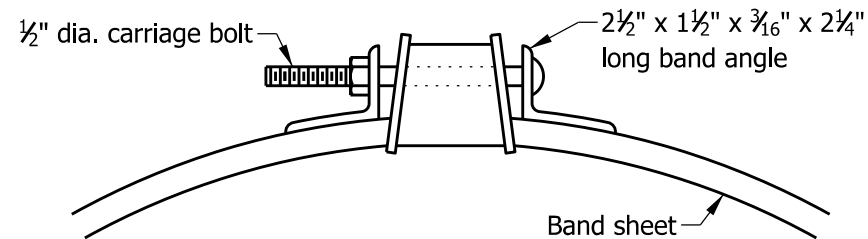
SECTION A-A
STANDARD GRATE DETAIL



SECTION A-A
GRATE DETAIL WITH MESH



SECTION B-B



SECTION C-C

STANDARD SIZES						
PIPE THICKNESS (IN.)	DIAMETER OF PIPE (IN.)					
	12	15	18	24	30	36
0.064	X	X	X	X	X	X
0.079	X	X	X	X	X	X
0.109	N.A.	N.A.	N.A.	N.A.	X	X

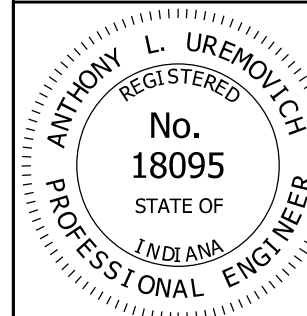
X - Size available for designated thickness
N.A. - Size not available for designated thickness

INDIANA DEPARTMENT OF TRANSPORTATION

SLOTTED DRAIN PIPE

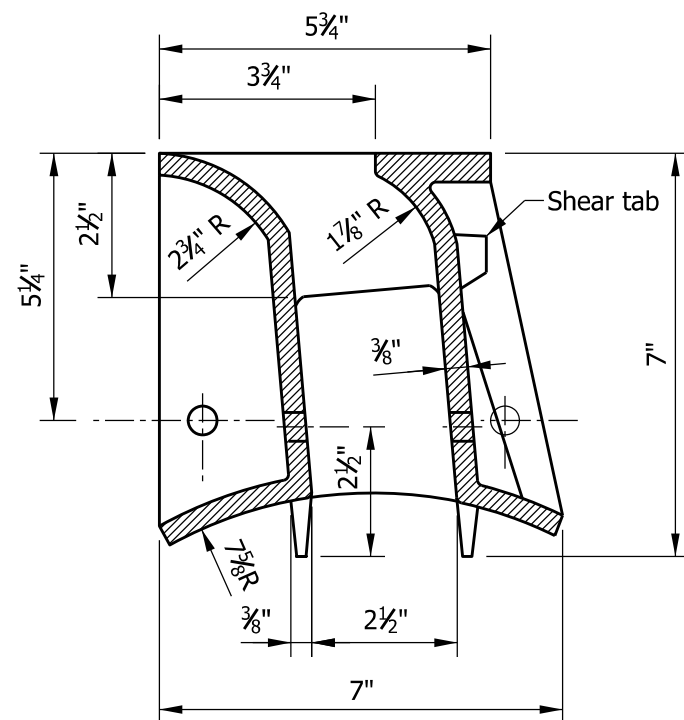
JANUARY 1998

STANDARD DRAWING NO. E 715-SLDR-02

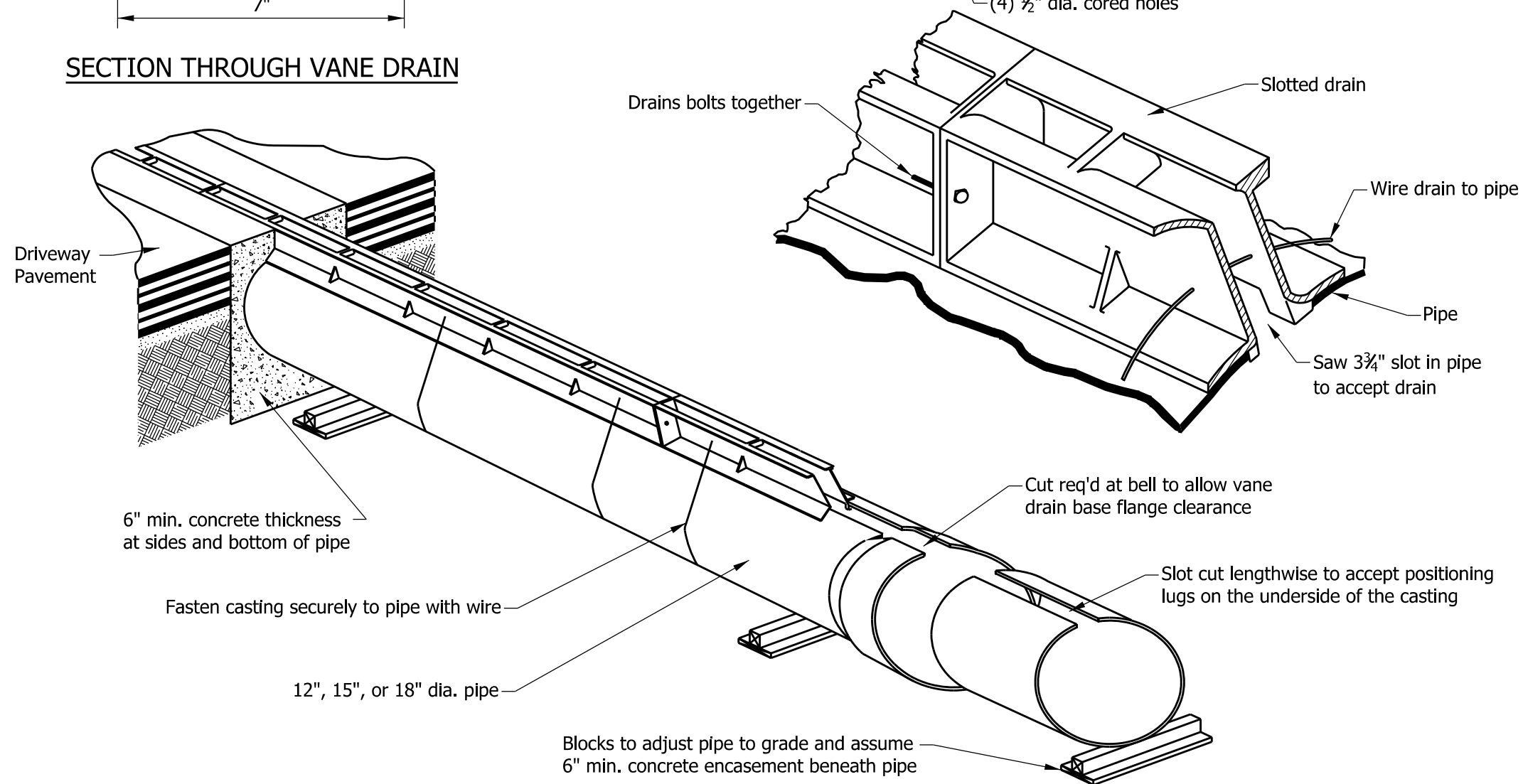
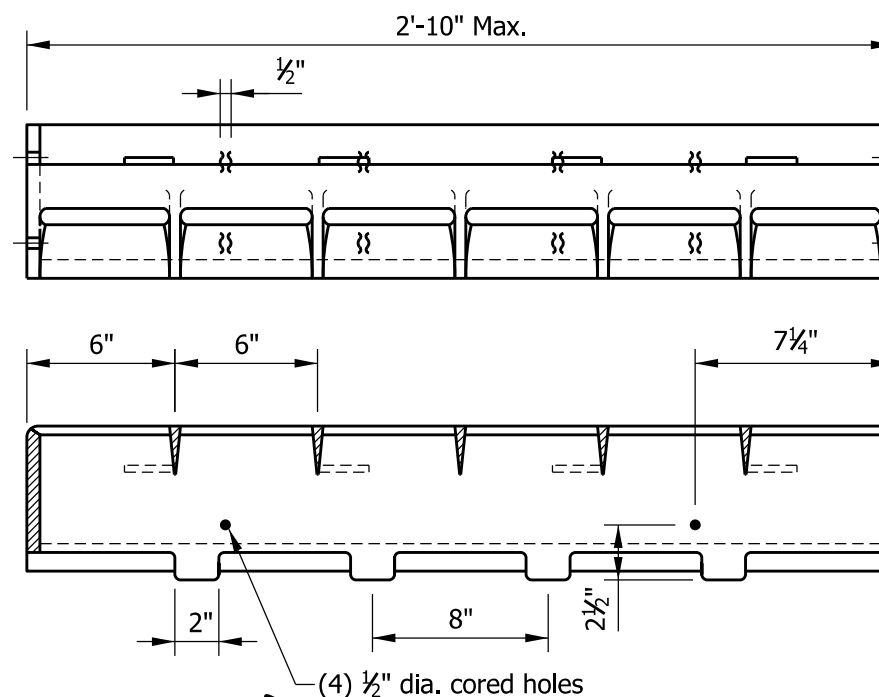


/s/ *Anthony L. Uremovich* 11-15-99
DESIGN STANDARDS ENGINEER DATE

/s/ *Firooz Zandi* 11-15-99
CHIEF HIGHWAY ENGINEER DATE



SECTION THROUGH VANE DRAIN

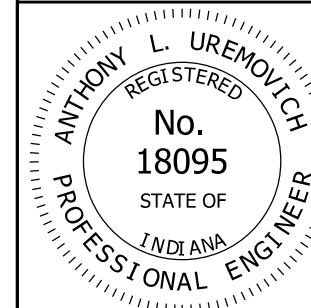


INDIANA DEPARTMENT OF TRANSPORTATION

SLOTTED VANE DRAIN PIPE

APRIL 1995

STANDARD DRAWING NO. E 715-SLDR-03



/s/ Anthony L. Uremovich 11-15-99
DESIGN STANDARDS ENGINEER DATE

/s/ Firooz Zandi 11-15-99
CHIEF HIGHWAY ENGINEER DATE